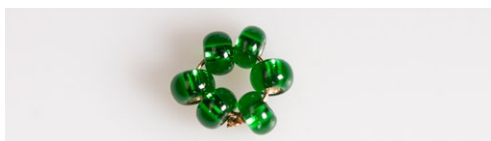


3. Thread **R6** and make an eyelet on each of the six ends.
4. Put wires together and thread 6 x **R1** on these „trunk“ wires.
5. Then switch levels and thread 1 x **R1**.
6. You will not add **R1** on Level 1 – instead create the treetop: First, on top of the last **R1**, cut off two wires using large cutting pliers. Tie two rings on the wire using 6 x **R8** and 6 x **R10**.



Add 1 x **R8** onto the top. Take off the treetop, both rings, the two top levels, and 2x **R1**.



7. Brush glue onto the wires and set them back into place.

8. Once the glue is dry, decorate the tree with gold thread.



DESIGN BY HELENA CHMELÍKOVÁ

PRECIOSA ORNELA introduces beads and seed beads from the PRECIOSA Traditional Czech Beads brand.

PRECIOSA Rocailles

ART No.: 331 29 001

Sizes: 10/0, 6/0



ART No.: 331 19 001

Sizes: 8/0, 1/0




 PRECIOSA | Traditional Czech Beads

BEAD SHOP ZÁSADA
468 25 Zásada
+420 488 117 743
beadshop@preciosa.com
50°41'49 N, 15°15'55 E

GLASS SHOP DESNÁ
Krkonošská, 468 61 Desná
+420 488 117 525
glassshop@preciosa.com
50°45'41 N, 15°19'7 E

preciosa-ornela.com
facebook.com/PreciosaOrnela

December 2014 © PRECIOSA ORNELA, a.s.

 PRECIOSA | Traditional Czech Beads



CHRISTMAS TREE

CHRISTMAS DECORATION MADE FROM PRECIOSA Traditional Czech Beads

preciosa-ornela.com © PRECIOSA ORNELA, a.s.

Preciosa Ornela wish you happy holidays and many creative ideas when working with all types of Czech beads and seed beads from the PRECIOSA Traditional Czech Beads brand.

Materials and Tools:

PRECIOSA Rocailles (R10
331 29 001; 10/0; 57060 (1146 pcs)



PRECIOSA Rocailles (R8)
331 19 001; 8/0; 57060 (504 pcs)



PRECIOSA Rocailles (R6)
331 29 001; 6/0; 16110 or 17110 (45 pcs)



PRECIOSA Rocailles (R1)
331 19 001; 1/0; 16110 or 17110 (15 pcs)



Mix of MC Beads
451 19 602; 4, 6 a 8 mm; 00030 AB



Mix of Imitation Pearls
131 19 001; 4, 6 a 8 mm; 02010/70402



Gold wire (0. – 0.5 mm); Head pin (16, 14, 12 mm) 5 mm rings;
Sturdy flexible wire (0.9 mm, 3 x 20 cm);
Stem- Brass or Tombac alloy



Notions for decoration-White ribbon (4 mm wide); Gold thread;



Flat-nosed pliers
(to tighten wires, close rings); Jewelry cutting pliers – small and large (hard wire); Narrow flat-nosed pliers; Glue for non-porous material

Difficulty: ●●●●●

Procedure:

The tree has ten levels, stands on three legs and is finished off with a glued tree-top.

Making the Tree (Levels 1 is Top Level)

Levels 1 & 2
These two levels are made with six loops made of 6x R, that are interconnected (Level 1 R10 and Level 2 R8), (fig. no. 1).



Levels 3 & 4
Sew the base just like Level 2 with R8. Then add another six loops made with R10 (Level 3- 8 pcs and Level 4 – 12 pcs), (fig. no. 2).



Levels 5 & 6
Use the same steps as Level 3 and 4, and again add an additional six loops, each made of 4 x R8. Add new loops to the tops of the

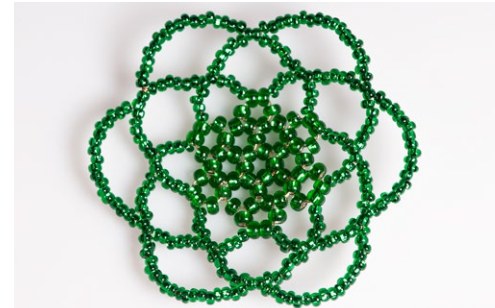
existing loops with R10 (Level 5- 10 pcs, Level 6- 14 pcs), (fig. no. 3).



Levels 7 & 8
Use the entire Level 5 as a base. Add new loops to the tops of the existing loops with R10 (Level 7- 14 pcs, Level 8- 18 pcs), (fig. no. 4).



Level 9 & 10
Use the entire Level 7 as a base. Add new loops to the tops of the existing loops with R10 (Level 9- 18 pcs, Level 10- 22 pcs), (fig. no. 5).



Finish off the loose wire ends by twisting them together or by winding two wires (fig. no. 6).



Decorating the Tree

Put 6 x 4 mm, 12 x 6 mm a 15 x 8 mm beads on head pins.



Attach them to the Levels using rings:
On Level 1 and 2 attach 4 mm beads on every other loop;
On Levels 3 through 6 attach 6 mm beads on every other loop; and
On Levels 7 through 9 attach 9 mm beads on every other loop.
On Level 10 add 8 mm beads on each loop.



Tie a bow on one of the empty loops on Levels 4, 6, 7, 8, and 9.



Putting it all Together

1. You will need three wires that are 0.90 mm in thickness and approximately 20 cm long.
2. Measure 5 cm from each end (all six ends) and bend to nearly 90 degrees.