



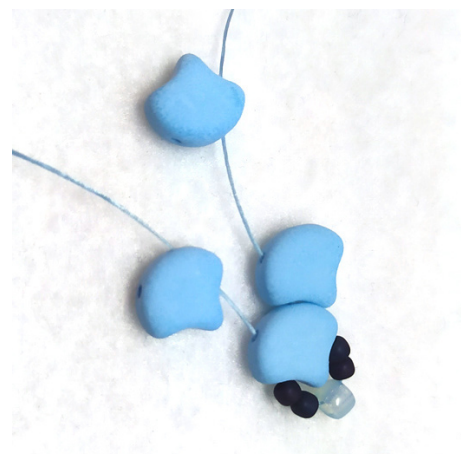
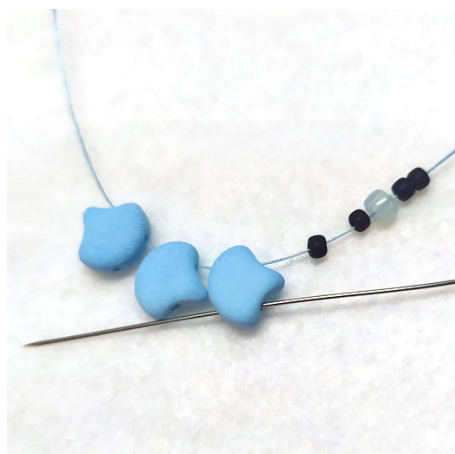
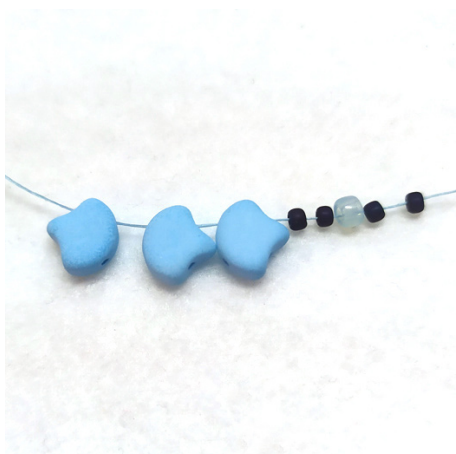
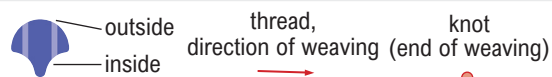
Materials (pair of earrings)

- 8 pcs **Matubo Ginko**
- 10 pcs **Matubo Gemduo**
- 22 pcs **Matubo 8/0**
- 38 pcs **Toho 11/0**
- 40 pcs **Toho 15/0**

- 2 pcs **jump rings**
- 2 pcs **ear wire hooks or earring ball & ring studs with backs**
if you want the earrings more decorative use eye pins and two bigger beads

beading needle (size 10 or 12)
beading thread (S-Lon, Nymo...)

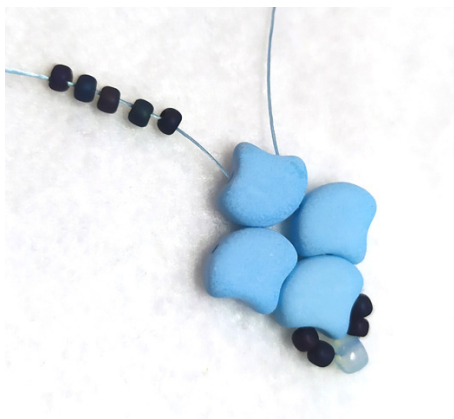
Difficulty: for beginners



1) String 1x Ginko from the inside, 2x Ginko from the outside, 2x Toho 11/0, 1x Matubo 8/0 and 2x Toho 11/0.

2) Go through the second hole (from inside) of the same Ginko bead that you just added.

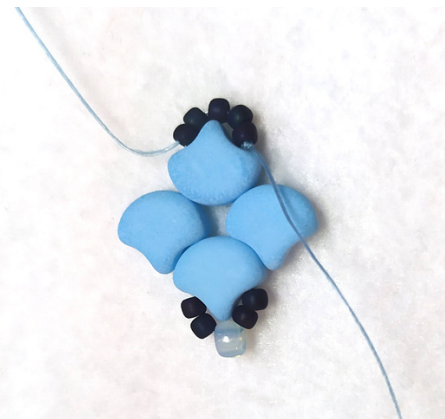
3) String one Ginko from the inside.



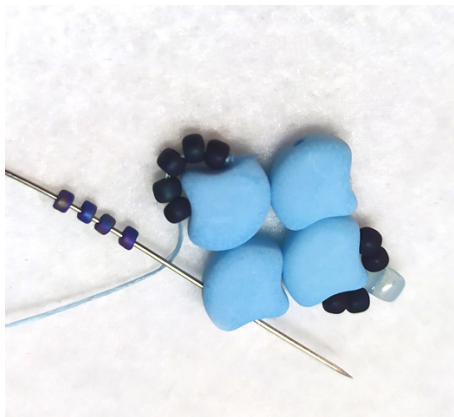
4) Go through the second hole (from outside) of the first added Ginkgo and string 5x Toho 11/0.



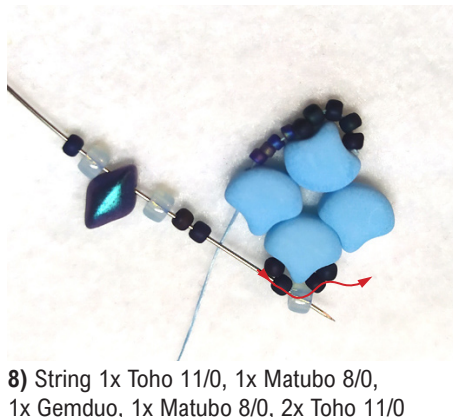
5) Tie the beads together with a double knot.



6) Pass through 5x Toho 11/0.



7) String 4x Toho 15/0 and go through the free hole of the next Ginkgo (from outside).



8) String 1x Toho 11/0, 1x Matubo 8/0, 1x Gemduo, 1x Matubo 8/0, 2x Toho 11/0 and go between two Tohos 11/0 and sew through Toho 11/0 and then through Matubo 8/0 and Toho 11/0.



All Gemduos must face the same direction!

9) String 2x Toho 11/0, 1x Matubo 8/0, 1x Gemduo, 1x Matubo 8/0, 1x Toho 11/0 and go through the free hole of the next Ginkgo (from inside).



10) Add 4x Toho 15/0 and sew through the next three Tohos 11/0.



11) String 5x Toho 15/0 and go through the same Toho 11/0 from the other side.



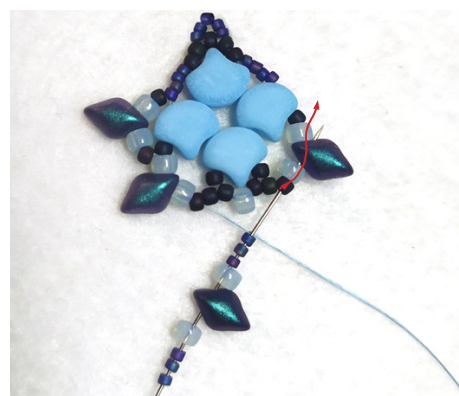
12) Tighten to create a loop.



13) Go through the next two Toho 11/0 and four Toho 15/0. Add 1x Toho 11/0, 1x Matubo 8/0, 1x Gemduo, 1x Matubo 8/0, 1x Toho 11/0 and go between Toho 11/0 and Matubo 8/0.



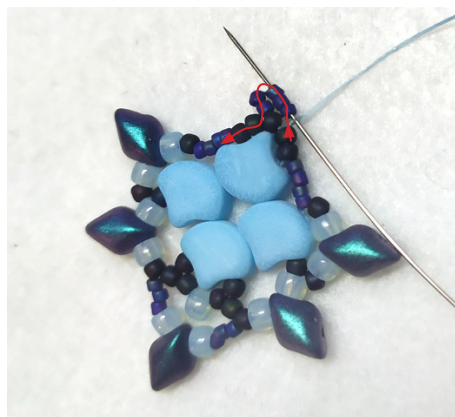
14) Pass through Matubo 8/0, Gemduo, Matubo 8/0 and the next one Toho 11/0.



15) Add 3x Toho 15/0, 1x Matubo 8/0, 1x Gemduo, 1x Matubo 8/0, 3x Toho 15/0 and sew through the last of next three Toho 11/0, Matubo 8/0, Gemduo and Matubo 8/0.



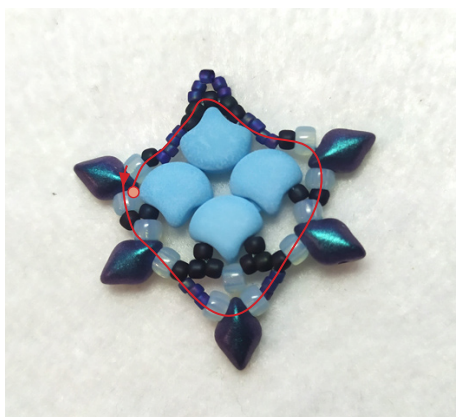
16) Add 1x Toho 11/0, 1x Matubo 8/0, 1x Gemduo, 1x Matubo 8/0 and 1x Toho 11/0 and go through the next four Tohos 15/0 and two Tohos 11/0.



17) Pass through 5x Toho 15/0 of the loop as shown.



18) Pass again through beads as shown.



19) Pass again through beads as shown, the earrings will be firmer. Finish with a knot and stitch.



20) Open and insert the earring hook through the loop and close or use jump ring to connect with ball & ring stud.



Pay attention to the correct position of eyes on the pin.

21) If you want add bigger bead between earring hook and earring, use eye pin.



Ginko: 91250
Gemduo: 03000/01890
Matubo 8/0: 23980/14400
Toho11/0: TR-11-49F
Toho 15/0: TR-15-81



Ginko: 81250/84110
Gemduo: 02010/92940
Matubo 8/0: 90080/85106
Toho11/0: TR-11-46
Toho 15/0: TR-15-PF557



Ginko: 61300/84110
Gemduo: 23980/24404
Matubo 8/0: 03000/85001
Toho11/0: TR-11-413
Toho 15/0: TR-15-PF557



Ginko: 41000/84110
Gemduo: 00030/65591
Matubo 8/0: 23980/15726
Toho11/0: TR-11-49F
Toho 15/0: TR-15-46



Ginko: 02010/92927
Gemduo: 23980/94105
Matubo 8/0: 61000
Toho11/0: TR-11-49F
Toho 15/0: TR-15-2637F



Ginko: 02010/92921
Gemduo: 23980/24208
Matubo 8/0: 23980/14495
Toho11/0: TR-11-557
Toho 15/0: TR-15-557