


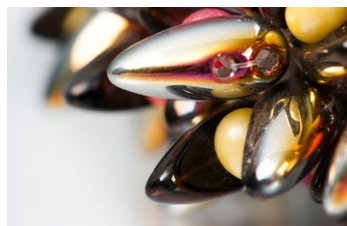


DESIGN BY HELENA CHMELÍKOVÁ

 **PRECIOSA** | Traditional Czech Beads



PRECIOSA ORNELA presents the new PRECIOSA Chilli™ pressed bead from the PRECIOSA Traditional Czech Beads brand.



**PRECIOSA Chilli™**  
ART No.: 111 01 357  
SIZE: 4 x 11 mm



 **PRECIOSA** | Traditional Czech Beads

**BEAD SHOP ZÁSADA**  
468 25 Zásada  
+420 488 117 743  
beadshop@preciosa.com  
50°41'49 N, 15°15'55 E

**GLASS SHOP DESNÁ**  
Krkonoská, 468 61 Desná  
+420 488 117 525  
glassshop@preciosa.com  
50°45'41 N, 15°19'7 E

preciosa-ornela.com  
facebook.com/PreciosaOrnela

July 2015 © **PRECIOSA ORNELA, a.s.**

**PRECIOSA rokajl**  
ART No.: 331 19 001  
SIZE: 6/0



**PRECIOSA rokajl**  
ART No.: 311 19 001  
SIZE: 6/0



# UNKEMPT

BRACELET MADE USING PRECIOSA Chilli™

PRECIOSA ORNELA presents the new **PRECIOSA Chili™** pressed bead from the PRECIOSA Traditional Czech Beads brand. The elongated imaginative shape supplements the popular range of two-hole beads with which it has an identical hole spacing. The axially deviated holes predestine this bead for simple compositions in the form of a zip in the case of a regular stringing on a strong or flexible material, during which the ridge of the bead excellently interlocks into the side groove of the adjacent one. The flattened shape and the side orientation of the holes enable the creation of flat relief applications in combination with round beads and seed beads up to a size of 4 mm. It is also suitable for use with the PRECIOSA Pip™, PRECIOSA Solo™ or PRECIOSA Thorn™ beads. This new bead is suitable for all types of surface finishes.

**Materials and Tools:**

PRECIOSA Chili™  
111 01 357; 4 x 11 mm;  
00030/28001; 240x (Marea)



PRECIOSA Rocailles **R6**  
331 19 001; 6/0; 16986; 30x (yellow)



331 19 001; 6/0; 17998; 30x (pink)



331 19 001; 6/0; 09351; 30x (salmon)




311 19 001; 6/0; 93140; 30x (orange)



A 0.20 – 0.30 mm nylon line; Opelon; a thin needle; scissors; thin tailor's thread; flat nosed pliers (for flattening the beginning of the line before threading it into the eye of the needle)

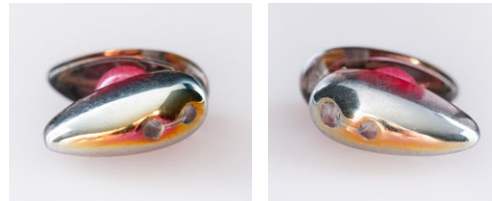
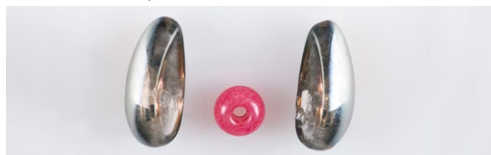


Difficulty: 

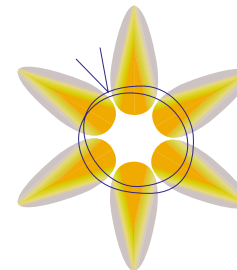
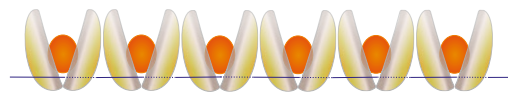
**Procedure:**

The Chili beads are two-rowed. They have one hole at the edge of the bead and a second in the middle. You need 120 small parts consisting of two Chili beads with a 6/0 rocaille between them to make this bracelet. It is necessary to make 30 pieces from each rocaille color. Tie six of them into a ring. There will be 20 rings. You can mix the colors as you wish. String the rings onto the Opelon.

**Step 1:**  
Thread the line through the outer hole of the bead in the direction from the inside (the groove) out. Thread the line through the central hole from the outside inwards. String a 6/0 rocaille. Take the second bead. Thread the line outwards through the central hole. Thread the line through the outer hole inwards. Tighten. Tie off the line using three knots. Cut off the ends of the lines as close to the beads as possible.



**Step 2:**  
Use the opening created between the rocaille and both beads. Thread the line through it in six parts of any arbitrary color. Thread the line through the holes once again. Tie off the line with three holes. Cut off the end of the lines as near as possible to the beads.



**Step 3:**  
String about 15 cm of thin tailor's thread onto the thin needle. Tie off the ends. This will lead to the creation of a large loop. You can also use thicker tailor's thread with a large loop.

**Step 4:**  
Cut off about 2x 70 cm of Opelon. Thread them into the loop. Fold them in half. String all the rings. Tie off both ends of the Opelon (there are four strands at each end) with three knots. Straighten the bracelet.



The bracelet will never retain its shape permanently, so you will have to straighten it. You can extend the bracelet, if you make more parts.