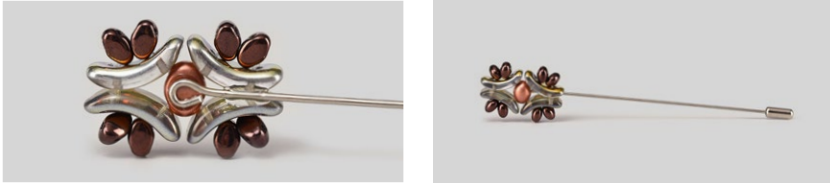


The pin

Glue the back of a fragment to a pin.
You can use a straight wire or one with
an eye. Glue it between the **B** or the eye
below the **C2**.



Design by Helena Chmelíková

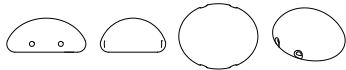
PRECIOSA Bow™

111 01 382; 3,5 x 15,5 mm



PRECIOSA Candy Oval

111 01 388; 6 x 8 mm; 4 x 6 mm



PRECIOSA Rocailles

331 19 001; 10/0; 6/0



*Preciosa Ornela introduces beads and seed beads
from the PRECIOSA Traditional Czech Beads™ brand.*

Preciosa-Ornela.com



SEWN BRACELET USING PRECIOSA BOW™ AND PRECIOSA CANDY OVAL

Dusk

PRECIOSA

Dusk

Try creating this accessory using a pair of two-holed beads.

One of them is the little used PRECIOSA Bow™ bead which you can combine with the now standard PRECIOSA Candy Oval bead. Be inspired by the substantial effect of this bracelet in subdued tones.

Materials and tools:

PRECIOSA Bow™ (B)
111 01 382; 3,5 x 15,5 mm;
00030/98533 grey rainbow;
the bracelet: 28x, the pin: 4x



PRECIOSA Candy Oval
111 01 388; 6 x 8 mm;
02010/01770 copper;
the bracelet: 7x, the pin: 1x (C1)



111 01 388; 4 x 6 mm;
23980/15726 brown;
the bracelet: 56x, the pin: 8x (C2)



PRECIOSA Rocailles
331 19 001; 10/0; 78141 grey;
the bracelet: 274x, the pin: 46x (R1)



331 19 001; 6/0; 01560; grey rainbow;
the bracelet: 4x (R2)



- a round spring fastening with eyes;
6 mm rings; a brooch pin with a sheath



- a 0.20 mm nylon line; a thin needle;
scissors; flat nose pliers;
glue for non-absorbent materials



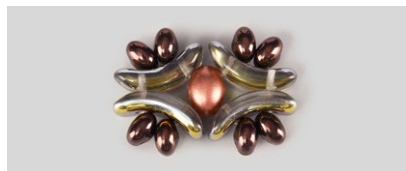
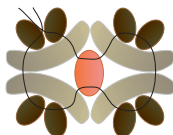
Difficulty: 

Procedure:

The bracelet

Sew a fragment made of B and C.

Step 1:
String 1x C1, 2x B turned in relation to one another as a mirror image and 2x C1. Thread the line through the second hole of the 2nd B. String 1x C2, 1x B and 2x C1. Thread the line through the second hole of the 3rd B. String 1x B and 2x C1. Thread the line through the second hole of the 4th B, the second hole of the C2 and the second hole of the 1st B. String 1x C1 at the end. Thread the line through everything one more time. Tie off the end of the line and pull it into the holes.

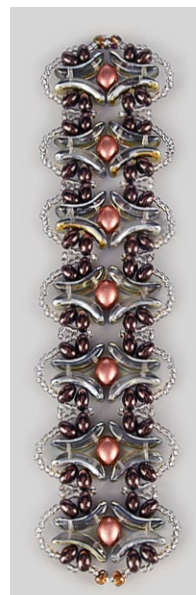
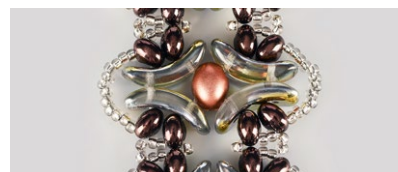


Step 2:
You need 7 such fragments.



Connect the fragments together into a bracelet.

Step 3:
Sew through the second holes in the C1 and add R. The outer arch consists of 12 R1. Add 2x R1 and 1x R2 on both sides of the fastening. Thread the line through an eye on the fastening. Thread 2x R1 into the gap between the C1. String 1x R1 between the C1 from the neighbouring fragments. Sew together this R1 and the R1 in the gaps between the C1 and the C1 between them. Add 2x R1 when sewing above them.



Step 4:
Sew through the R and the second holes in the C1 one more time. Do not sew through the R1 next to the C1.

Step 5:
Make a chain out of 8x 6mm rings.
Decorate the last one with an R2.
Connect them to an eye on the fastening.

