

„Oloria“ Bracelet



Material :

Paisleyduo **PD**: 24 pcs

Matubo Gemduo **GD**: 38 pcs

Matubo Miniduo **MD**: 48 pcs

Matubo **11/0 R**: approx. 2 g (you can use TOHO Round 11/0 instead)

Matubo **8/0**: 2 pcs (you can use TOHO Round 8/0 instead)

TOHO Round **15/0**: approx. 1,5 g

beading needle and thread, 2 jump rings (5mm outer diameter, wire gauge 24-22), clasp of your choice

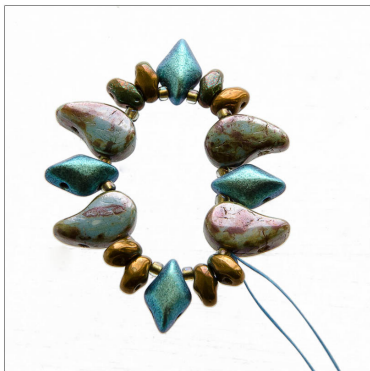
Difficulty: Intermediate



1. String 1x 15/0, 2x MD, 1x 15/0, 1x GD, 1x 15/0, 2x MD, 1x 15/0, 1x PD, 1x 15/0, 1x GD, 1x 15/0, 1x PD, 1x 15/0, 2xMD, 1x 15/0, 1x GD, 1x 15/0, 2x MD, 1x15/0, 1x PD, 1x 15/0, 1x GD, 1x 15/0 and 1x PD. Make sure all the PD beads are aligned as shown in the photo.



6. Add one 11/0 and one GD and pass through the upper hole of the next GD.



2. Tie a square knot to form a circle.



7. Add one GD and one 11/0 and pass through the upper hole of the next PD.



3. Pass through the next 15/0 and the lower hole of the next MD.



8. Pull snug.



4. Pass back through the upper hole of the same MD the thread is exiting from.



9. Add one 11/0 and pass through the upper hole of the next MD.



5. Add one 11/0 and pass through the upper hole of the next PD.



10. Add one 15/0, one 11/0 and one 15/0 and pass through the upper hole of the next MD.



11. Pull snug. This is what you should get.



16. Add one 11/0 and one GD and pass through the upper hole of the next GD.



12. Add two 15/0s and one 11/0 and pass through the upper hole of the next GD.



17. Add one GD and one 11/0 and pass through the upper hole of the next PD.



13. Add one 11/0 and two 15/0s and pass through the upper hole of the next MD.



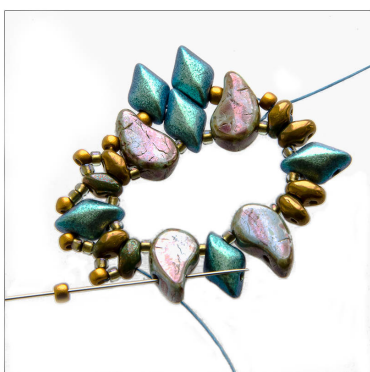
18. Pull snug.



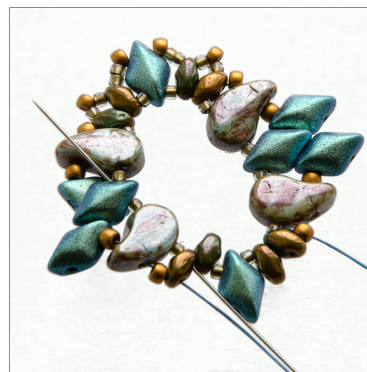
14. Add one 15/0, one 11/0 and one 15/0 and pass through the upper hole of the next MD.



19. Add one 11/0 and pass through the upper hole of the next Miniduo.



15. Add one 11/0 and pass through the upper hole of the next PD.



20. Pass back through the lower hole of the same Miniduo and also through the next 15/0, lower hole of the next PD, another 15/0 and lower hole of the next GD.



21. The thread is exiting from the lower hole of the GD. Pass back through the upper hole of the same GD and also through the lower hole of the following GD.



26. ... through the upper hole of the next PD, another 11/0...



22. Pass back through the upper hole of the same GD the thread is exiting from.



27. ... and through the upper hole of the next MD.



23. Add one 8/0 and pass through the upper hole of the next GD.



28. Add one 15/0, one 11/0 and one 15/0 and pass through the upper hole of the next MD.



24. Like this.



29. Add two 15/0s and one 11/0 and pass through the upper hole of the next GD.



25. Pull snug. Then pass back through the lower hole of the same GD, through the next two GDs (as shown in the photo) and through the following 11/0 ...



30. Add one 11/0s and two 15/0s and pass through the upper hole of the next MD.



31. Add one 15/0, one 11/0 and one 15/0 and pass through the upper hole of the next MD.



36. Pull snug.



32. Pass through the next 11/0, upper hole of the next PD, the next 11/0 and then the lower hole of the next GD ...



37. Add one 11/0, one PD (narrow end, from the inside), as shown in the photo), one 11/0 and one MD.



33. ... and the next two GD (as shown in the photo).



38. Pass back through the upper hole of the last MD.



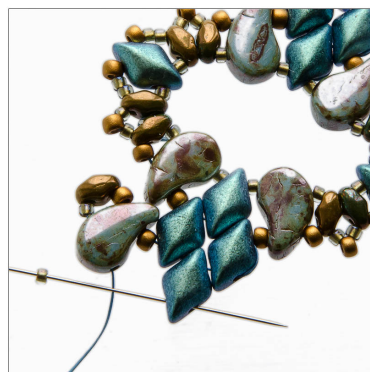
34. Pass back through the upper hole of the same GD the thread is exiting from.



39. Add one 15/0 and pass through the upper hole (wide end) of the next PD.



35. Add one GD and pass through the upper hole of the next GD.



40. Add one 15/0 and pass back through the upper hole of the next GD.

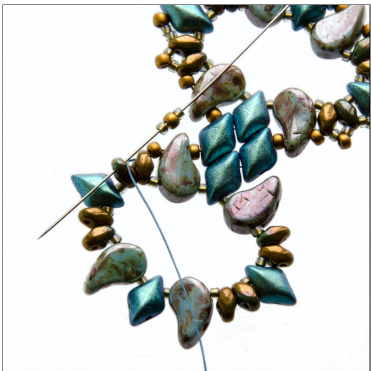


41. Add 1x 15/0, 1x PD, 1x15/0, 2x MD, 1x 15/0, 1x GD, 1x 15/0, 2x MD, 1x15/0. 1X PD, 1x 15/0, 1x GD, 1x 15/0, 1x PD, 1x 15/0, 2x MD, 1x 15/0, 1x GD, 1x 15/0 a 1x MD. Again, make sure all the PDs are aligned in the right direction. Then pass through the upper hole of

the last MD, the next 15/0 and the upper hole of the next PD. Pull snug.



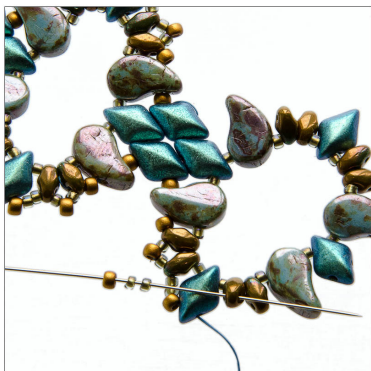
42. Pass back through the lower hole of the same PD the thread is exiting from, through the next 11/0 and the lower hole of the next MD.



43. Add one 15/0, one 11/0 and one 15/0 and pass through the upper hole of the next MD.



44. Add two 15/0s and one 11/0 and pass through the upper hole of the next GD.



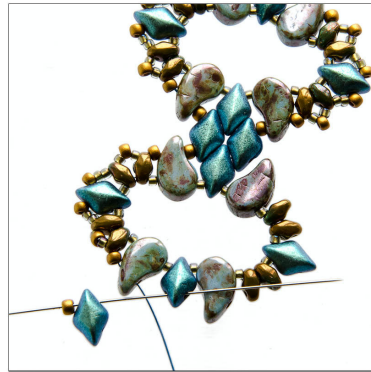
45. Add one 11/0 and two 15/0s. Pass through the upper hole of the next MD.



46. Add one 15/0, one 11/0 and one 15/0 and pass through the upper hole of the next MD.



47. Add one 11/0 and pass through the upper hole of the next PD.



48. Add one 11/0 and one GD and pass through the upper hole of the next GD.



49. Add one GD and one 11/0 and pass through the upper hole of the next PD.



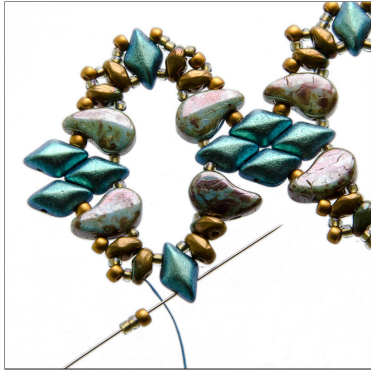
50. Add one 11/0 and pass through the upper hole of the next MD.



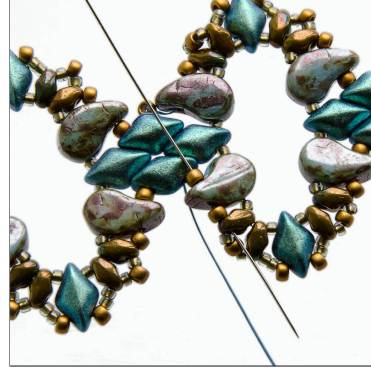
51. Add one 15/0, one 11/0 and one 15/0 and pass through the upper hole of the next MD.



56. Add one 11/0 and pass through the next three GD beads (as shown in the photo).



52. Add two 15/0s and one 11/0 and pass through the upper hole of the next GD.



57. Then pass through the next 11/0, nearest hole of the next PD, the next 11/0 and also the nearest hole of the next MD.



53. Add one 11/0 and two 15/0s and pass through the upper hole of the next MD.



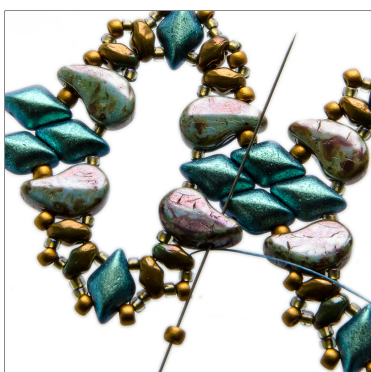
58. Pass back through the other hole of the same MD, then pass through the next 15/0 ...



54. Add one 15/0, one 11/0 and one 15/0 and pass through the upper hole of the next MD.



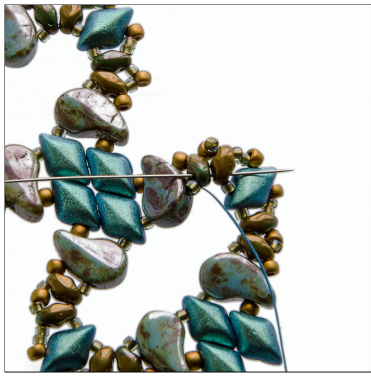
59. ... the nearest hole of the next PD, the next 15/0 and also the nearest hole of the next GD...



55. Add one 11/0 and pass through the upper hole of the next PD.



60. ... then through the next 15/0, nearest hole of the next PD and another 15/0 ...



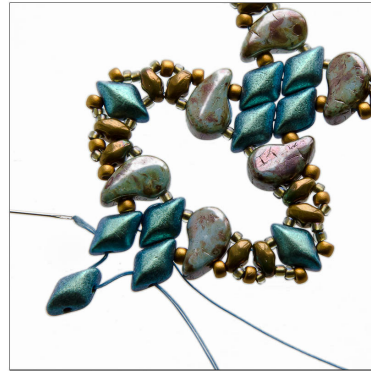
61. ... and the lower holes of the next two MDs.



66. Then again pass back through the upper hole of the same GD.



62. Then through the next 15/0, lower hole of the next GD and another 15/0 ...



67a. If you want to keep adding more units: Add one GD and pass through the upper hole of the next GD (like in steps 35. – 36.).



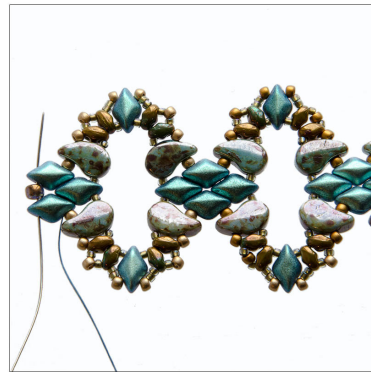
63. ... and the lower holes of the next two MDs ...



68. Then add another unit by repeating steps 37. - 65.).



64. ... the next 15/0, lower hole of the next PD, another 15/0 and lower hole of the next GD.

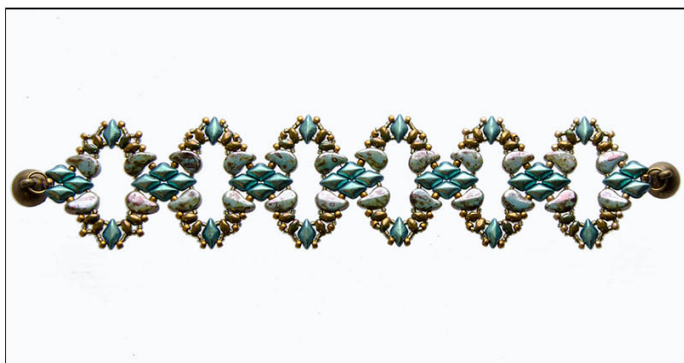


67b. When you reach the desired length, just add one 8/0 between the upper holes of the last two GDs (like in step 23). We'll later use these 8/0s to attach a clasp using the jump ring.



65. Then pass back through the upper hole of the same GD and also through the lower hole of the next GD in the row.





69. The bracelet is finished.



Materials used:

Paisleyduo **PD**: 03000 - 65431

Matubo Gemduo **GD**: 23980 - 94104

Matubo Miniduo **MD**: 53410 - 15780

Matubo vel. **11/0** R: 00030 - 01740

Matubo vel. **8/0**: 00030 - 01740

TOHO Round **15/0**: 262

Inspiration:



Materials used:

Paisleyduo **PD**: 02010 - 24505

Matubo Gemduo **GD**: 23980, 23980 – 14400, 10010 - 28002

Matubo Miniduo **MD**: 23980 - 84110

Matubo vel. **11/0** R: 00030 – 01710, 23980 – 14400

Matubo vel. **8/0**: 23980 – 14400

TOHO Round **15/0**: 49



Materials used:

Paisleyduo **PD**: 02010 - 24506

Matubo Gemduo **GD**: 23980, 10010 - 28002

Matubo Miniduo **MD**: 23980 - 84110

Matubo vel. **11/0** R: 23980, 02010 – 24506, 00030 - 01710

Matubo vel. **8/0**: 23980

TOHO Round **15/0**: 49F

Materials used:

Paisleyduo **PD**: 03000 - 65431

Matubo Gemduo **GD**: 23980 – 79080, 00030 - 29263

Matubo Miniduo **MD**: 40020 - 14400

Matubo vel. **11/0** R: 00030 - 01670

Matubo vel. **8/0**: 00030 - 01670

TOHO Round **15/0**: 702