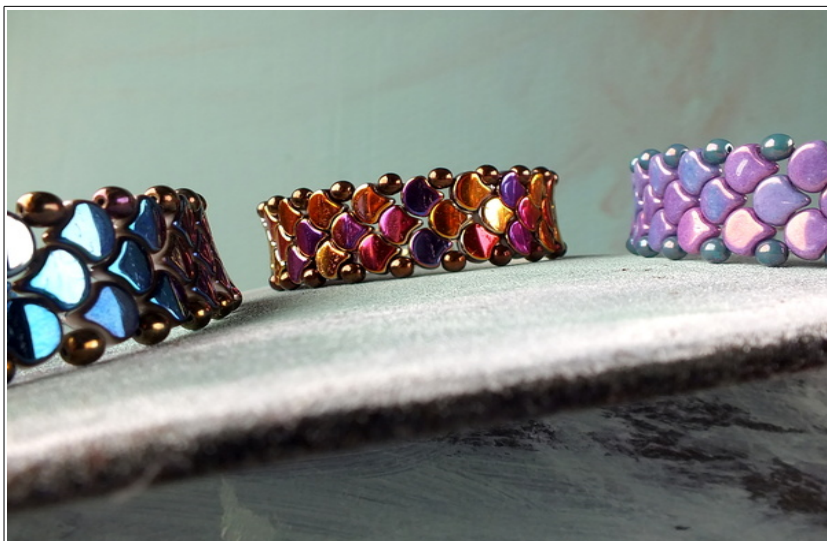




Snake Skin Bracelet

Simple and stunning bracelet with new Matubo Ginko beads



Material (for one bracelet)

Matubo Ginko (approx. 60 pcs)

4mm round beads (approx. 40 pcs)

Matubo 8/0 (2 pcs)

Matubo 11/0 (6 pcs)

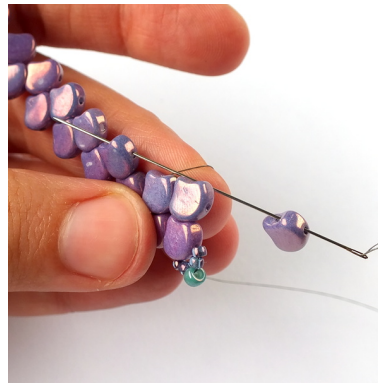
Jump rings, a clasp

Beading needle and thread (Fireline)

Difficulty: For beginners/intermediate



1) Put a bead stopper on the end of the thread.



6) Repeat step 5...



2) Start stringing the Ginkgo beads on your thread (from the inside) - as shown in the photo.

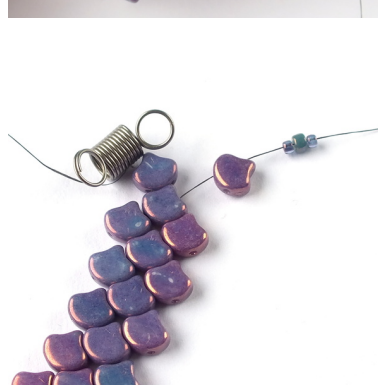
For a bracelet that is 16 cm (6,3 in) long, you will need 38 Ginkgo beads.



7)... until you reach the end of the row.

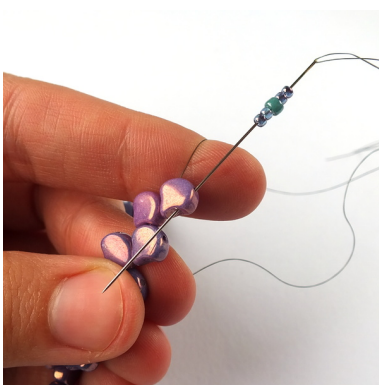


3) You can adjust the length of the bracelet by stringing more (or less) beads, but the total amount of beads should always be even.

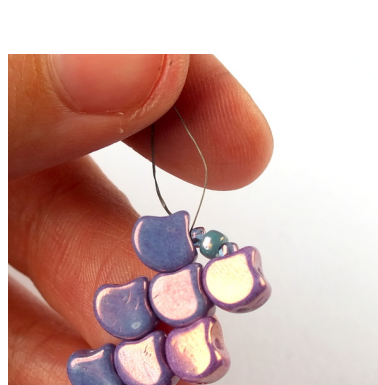


8) At the end of the row add one last Ginkgo bead (from the outside) and then one 11/0, one 8/0 and one 11/0.

Slide all the beads down.

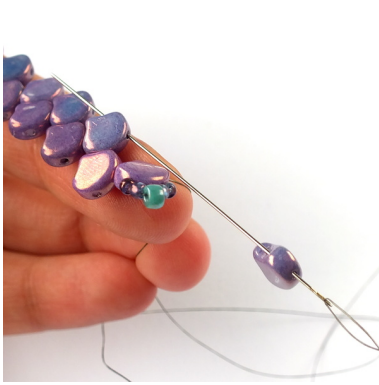


4) Add two 11/0s, one 8/0 and two 11/0s and pass back through the free hole of the last Ginkgo bead.

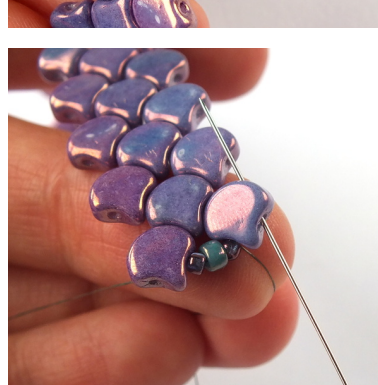


9) Now remove the bead stopper and tie both ends of the thread together:

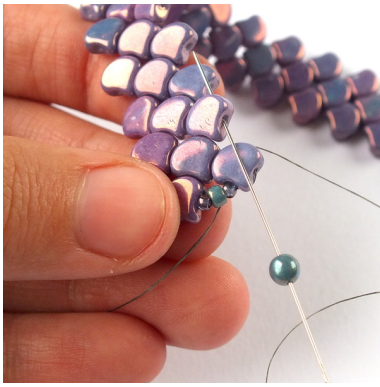
Keep your tension rather loose, so the bracelet remains flexible.



5) Add one Ginkgo bead (from the outside), skip the next Ginkgo bead in the row and then pass through the free hole of the second Ginkgo bead.



10) Pass back through the free hole of the nearest Ginkgo bead.



11) Add one 4mm round and pass through the free hole of the next Ginko bead in the row.



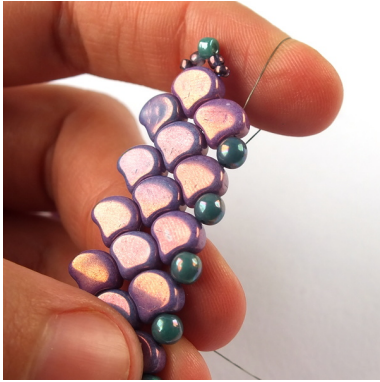
16) And then pass back through the free hole of the same Ginko.



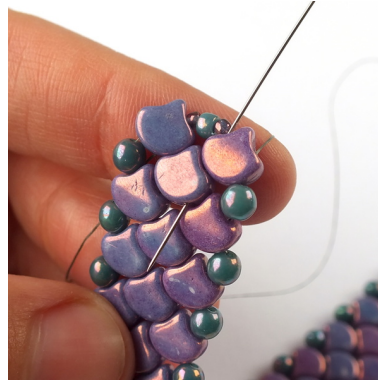
12) Repeat step 11...



17) Repeat steps 11 – 13 on the other side of the bracelet.



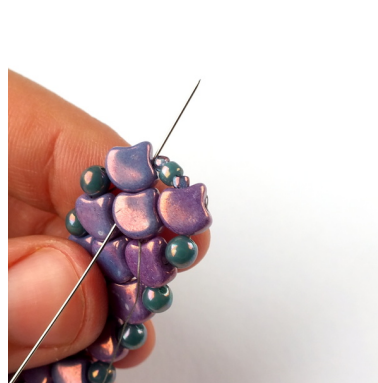
13)... until you reach the end of the row.



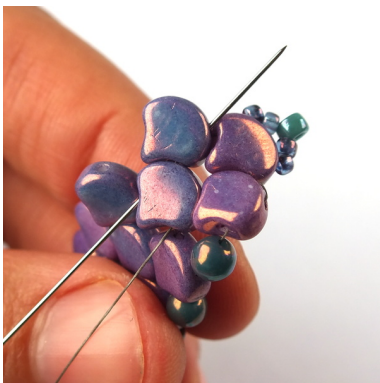
18) At the end of the row pass back through the other hole of the same Ginko the thread is exiting from – and then through the nearest hole of the next Ginko (as shown in the photo).



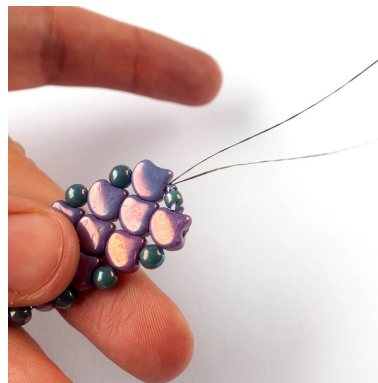
14) Pass back through the other hole of the same Ginko the thread is exiting from – and then through the nearest hole of the next Ginko (as shown in the photo).



19) Pass back through the other hole of the same Ginko the thread is exiting from – and then through the nearest hole of the next Ginko (as shown in the photo).



15) Pass back through the other hole of the same Ginko the thread is exiting from – and then through the nearest hole of the next Ginko (as shown in the photo).



20) Now both ends of the thread are exiting from the same spot. Tie both ends of the thread together and weave the ends in (you can also tie a few half-hitch knots between beads) and then cut off all the remaining thread.

21) Use jump rings to connect a clasp to the two 8/0s on both ends of the bracelet.



Colorways:



Matubo Ginko 03000/22203
4mm round 23980/21415
Matubo 11/0 02010/24510
Matubo 8/0 30060/85106



Matubo Ginko 03000/22203
4mm round 23980/14415
Matubo 11/0 00030/01610
Matubo 8/0 30060/85106



Matubo Ginko 03000/15726
4mm round 63130/15001
Matubo 11/0 03000/15726
Matubo 8/0 63130/15001