

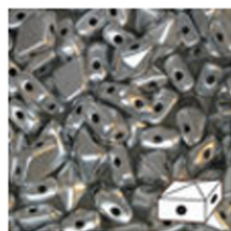
DiamondDuo™ & BeadStud Bracelet Pattern



R.M.



Materials Needed:



**DIAMOND DUO™ 2-HOLE
BEAD 5X8MM MATTE
SILVER - 50 GRAM BAG
(APX 340 PCS)**

PRODUCT#: **DD/MS/58**



Apx. 11 Beads Needed



**12MM JET CZECH GLASS
PYRAMID 2-HOLE
BEADSTUDS**

PRODUCT#: **BST12-23980**

Apx. 10 Beads Needed



**8/0 SPHINX LUSTER
STRUNG CZECH SEED
BEADS**

PRODUCT#: **SB/49102/8/0**

Apx. 50 Beads Needed



**11/0 SPHINX LUSTER
STRUNG CZECH SEED
BEADS**

PRODUCT#: **SB/49102/11/0**

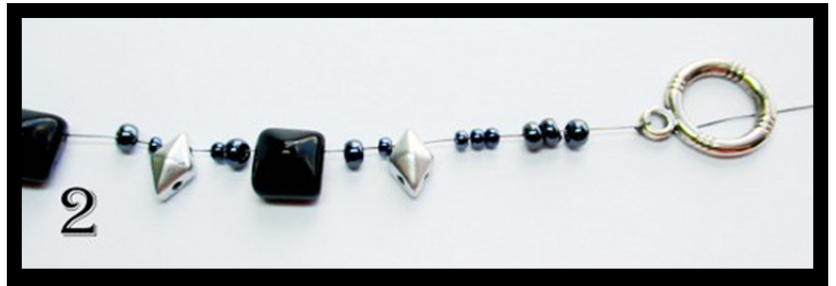
Apx. 50 Beads Needed

30" Thread Needed

1 Clasp & Toggle Set Needed

DiamondDuo™ & BeadStud Bracelet
Visual Tutorial by Růžena Mikulová

R.M.



R.M.