

CHRISTMAS WITH PRECIOSA Twin™

SEED BEAD
CHRISTMAS ORNAMENT



PRECIOSA Twin™ more possibilities

ART. No., Size:

PRECIOSA Twin™ seed beads

321 96 001

321 97 001, matt

2.5 x 5 mm

PRECIOSA Twin™ pressed beads

117 01 323

2.5 x 5 mm

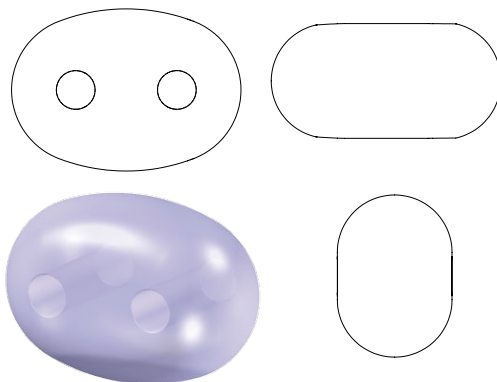


BEAD SHOP ZÁSADA
468 25 Zásada
+420 483 332 643
beadshop@preciosa.com
50°41'49 N, 15°15'55 E

GLASS SHOP DESNÁ
Krkonoská, 468 61 Desná
+420 483 343 525
glassshop@preciosa.com
50°45'41 N, 15°19'7 E


preciosa-ornela.com
facebook.com/PreciosaOrnela


October 2012 © PRECIOSA ORNELA, a.s.

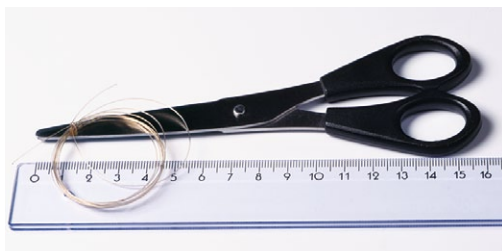


PRECIOSA Traditional Czech Beads will enable you to create luxurious, original Christmas decorations. You can try the creative use of PRECIOSA Twin™ seed beads, a two-hole product from the PRECIOSA Traditional Czech Beads brand, during the preparation of this Christmas decoration. In this manual, we will tell you how to make the Christmas seed bead lace on a glass bauble step by step. We wish you merry Christmas beadwork with the PRECIOSA Twin™ seed bead :o).

Materials and Tools:

 PRECIOSA Twin™ (T)
321 96 001; 2.5 x 5 mm

 PRECIOSA rocaille (R)
331 19 001; 10/0 (R10); 7/0 (R7)



a 0.25 mm nylon line, scissors, a ruler, an 8 cm Christmas bauble

Procedure:

The seed bead ornament consists of six pieces of two types of lacy decoration. First create the individual strips and then connect them with a seed bead ring in the lower section. Place the seed bead decoration on the base of the glass bauble and connect the six lacy strips around the neck of the glass bauble with a seed bead ring.

Step 1

Begin each individual seed bead ornament with

a so-called stop bead (figure no. 1). String the seed beads precisely according to the illustration, proceed according to the blue line (figure no. 2): 1x T, 8x R10, 1x R7, 10x R10, 3x R7, 2x R10, 2x T, 1x R10, 2x T, 2x R10, 3x R7, 2x R10, 2x T, 1x R10, 2x T, 2x R10, 3x R7, 10x R10, 1x R7, 8x R10 and 1x T. The next stringing of the seed beads will close this ornament (the red line): proceed precisely according to the illustration (figure no. 3). Use to the list of seed beads in the basic stringing, but in the opposite order. Add the upper curves once the internal ones occur. Connect the ends of the lines with a firm double knot, pull them into the holes of the neighbouring seed beads and cut them.

Step 2

Proceed according to figure no. 4 when making the second type of ornament. First string half the internal curve, add a rocaille to the tip and close the drop with the same stringing in the opposite order. Pass the line through the 1. R7 and add the outer sections of the curves, tighten well and pass the line through the 1. R7 once again. String the seed beads from the internal central curve and the basis of the second lace drop. Leave this part of the stringing a bit looser: it is not necessary to tighten it straight away. The looser stringing will be of benefit when bending the stringing onto the curves of the ornament and when adding further material. Add the outer edge of the drop, the second internal central curve and both outer curves according to the red line (figure no. 5). Tie the ends of the lines in a firm double knot, pull the line back into the holes of the neighbouring seed beads and cut.

Step 3

Connect the two types of ornaments alternately using a seed bead ring. String 6-7x R10 between the individual rings according to the size of the glass bauble.

