



"Fulvia" Necklace

Make this classy and elegant necklace using Miniduo beads



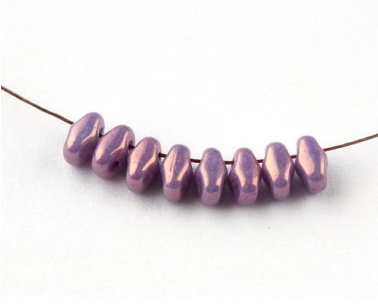
Material (for five beaded beads - one large cube, two large rondelles and two smaller rondelles):

Matubo Miniduo (approx. 120 pcs)
 15/0 Japanese seed beads (approx. 3 grams)
 4mm Swarovski Bicones (4 pcs)
 3mm Swarovski Bicones (8 pcs)
 3mm Firepolished beads (16 pcs)
 Matubo 8/0s (approx. 100 pcs)
 Matubo 7/0s (32 pcs)
 Beading needle and thread (Nymo, Fireline)
 12mm round acrylic or wooden bead
For completing the necklace:
Various sizes of glass or gemstone beads (rounds or rondelles, from 3mm to 15mm), beading wire, bead tips, crimp beads, jump rings, a clasp.

Difficulty: Advanced

Cube

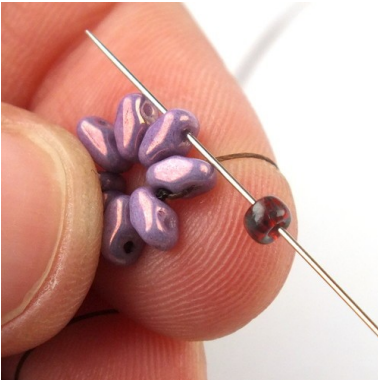
1) String eight Miniduos and slide them to the end of the thread.



2) Tie a square knot to form a circle, then pass through the upper hole of the nearest Miniduo.



3) Add one 8/0 and then pass through the upper hole of the next Miniduo.



4) Repeat step 3 ...



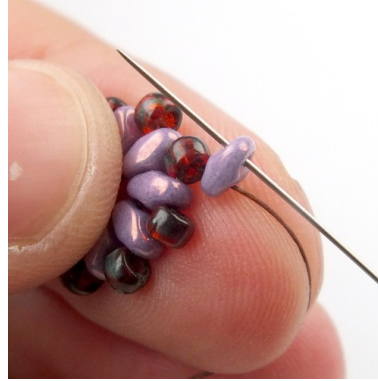
5) ... until you reach the end of the row. Make the step-up by passing through the upper hole of the next Miniduo and through the first 8/0.



6) Add one Miniduo and slide it to the "flower" you built in the previous steps. Try to keep it as close to the original "flower" as possible.



7) Now pass back through the upper hole of the new Miniduo.



8) Add seven new Miniduos and pass through the upper hole of the new Miniduo. Pull snug.



9) See - another "flower" starts to form.

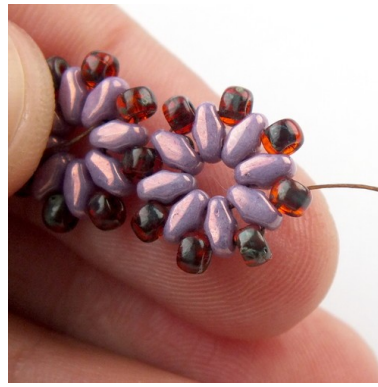


10) Pass through the same hole of the next Miniduo in the new "flower".





11) Now pass back through the other hole of the same Miniduo ...



16) Now weave through beads to get to the "middle" 8/0 from the new "flower" (as shown in the photo).



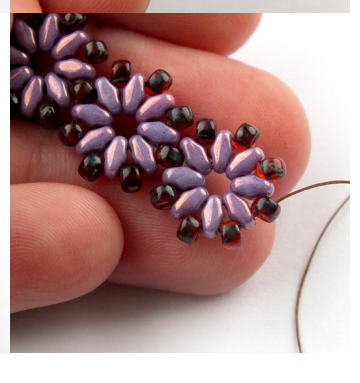
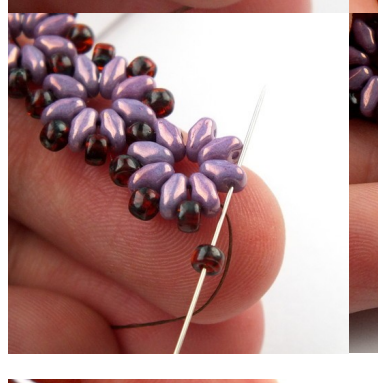
12) ... and then through the nearest 8/0 and through the same hole of the next Miniduo.



17) Add another "flower" by repeating steps 6 - 16



13) Add one 8/0 and then pass through the same hole of the next Miniduo.



14) Repeat step 13 ...



18) And again, start adding a new flower by repeating steps 6 - 16 ...



15) ... until you reach the end of the row.



19) ... but when you are adding the fourth 8/0, don't add a new one - instead add the "middle" 8/0 from the first "flower" (as shown on the photo). Then finish the row.

20) This is what you get after finishing step 19.



21) Now weave through beads to get to one of the "middle" 8/0s on the open side of the bead.



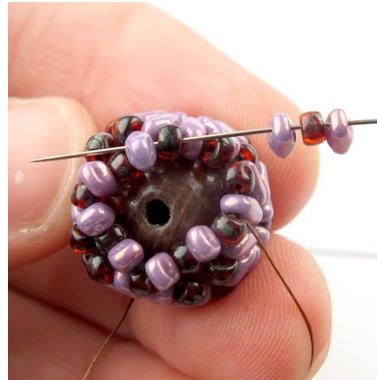
22) Put the core bead inside.



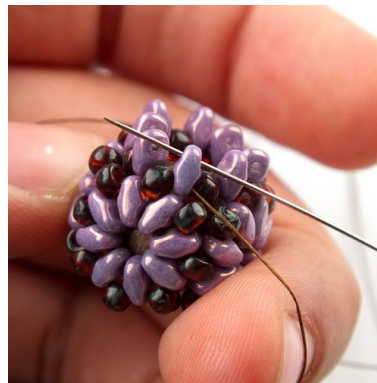
23) Add one Miniduo, one 8/0 and one Miniduo and pass through the "middle" 8/0 on the next side.



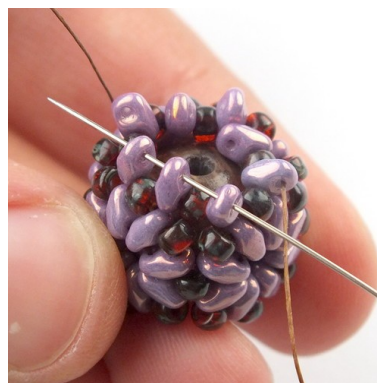
24) Repeat step 23, until you reach the end of the row.



25) At the end of the row make the step-up by passing through the last 8/0 and through the lower hole of the first Miniduo.



26) And then pass back through the upper hole of the same Miniduo.



27) Weave through upper holes of all the eight Miniduos you added in this row.



28) Pull snug. Now the one "open" side of the cube is closed.

29) Weave through beads to get to the other side of the bead. Repeat steps 22 - 28.



Now the basic beaded cube is finished. It looks very good on it's own, but the core bead is quite visible through the holes in the middle of each side. Therefore we'll be adding some embellishment to the four sides of the bead. The top and the bottom side will stay without embellishment.



30) On each corner of the cube, there are three 8/0s. Weave through beads to get to one of them.



31) Add three 15/0s and pass through the nearest 8/0 from the same corner.



32) Pull snug, so the three 15/0s form a small triangle.



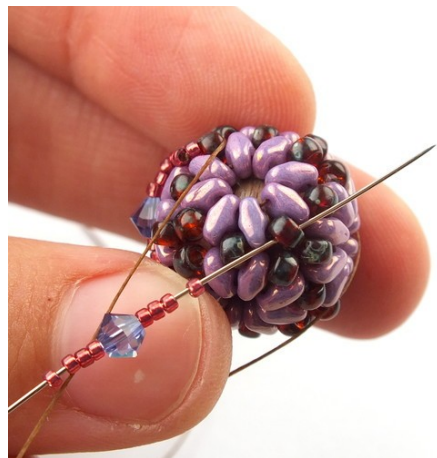
33) Add four 15/0s, one 4mm bicone and four 15/0s and then pass through the opposite 8/0 on the same "flower" (as shown on the photo).

Note - the thread leaves from the "bottom" of the 8/0 bead - so I'm passing through the opposite

8/0 bead from the "top".



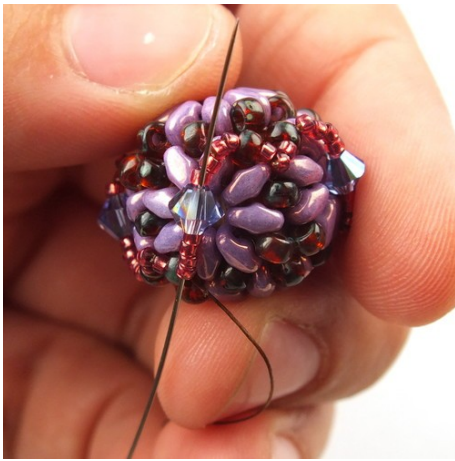
34) Add three 15/0s and pass through the next 8/0 from the same corner (like in steps 31 and 32).



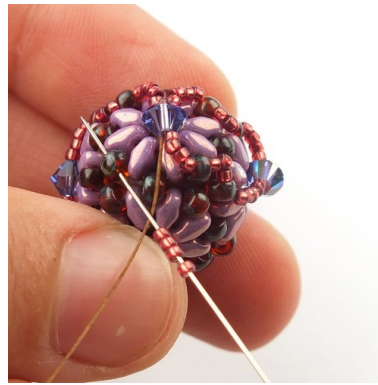
35) Add four 15/0s, one 4mm bicone and four 15/0s and then pass through the opposite 8/0 on the same "flower" (like in step 33).



36) Repeat steps 34 and 35, until you reach the end of the row. You should finish the row in the same bead you started in step 30.



37) Weave through beads to get to one of the 4mm bicones.



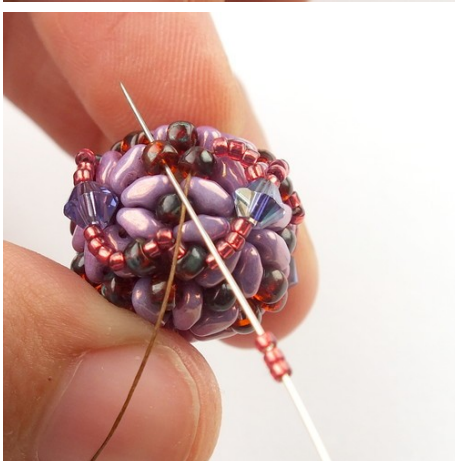
41) Repeat step 38 ...



38) Add four 15/0s and pass through the nearest 8/0 in the nearest "unused" corner.



42) ... and 39 and 40 ...



39) Add three 15/0s and pass through the nearest 8/0 in the same corner.

43) ... until you reach the end of the row. This is what the cube should look like after finishing this row. The thread should exit from the same 4mm bicone you started from in step 38.



40) Add four 15/0s and pass through the next 4mm bicone.

44) Pass through the next four 15/0s.

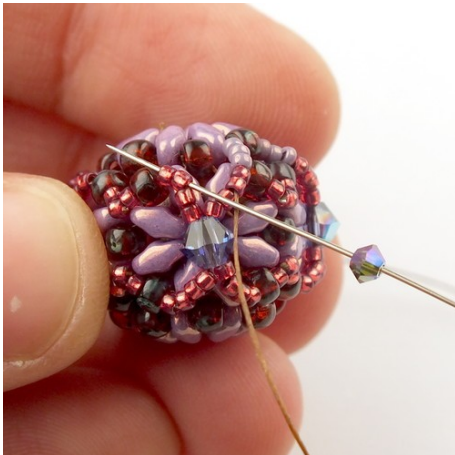




45) Add three 15/0s (I am using different color of 15/0s in this row) and pass through the nearest "unused" 8/0 in the corner.



46) Add three more 15/0s and pass through the next two 15/0s (as shown on the photo).

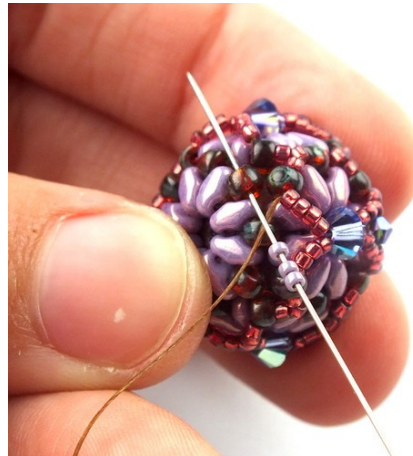
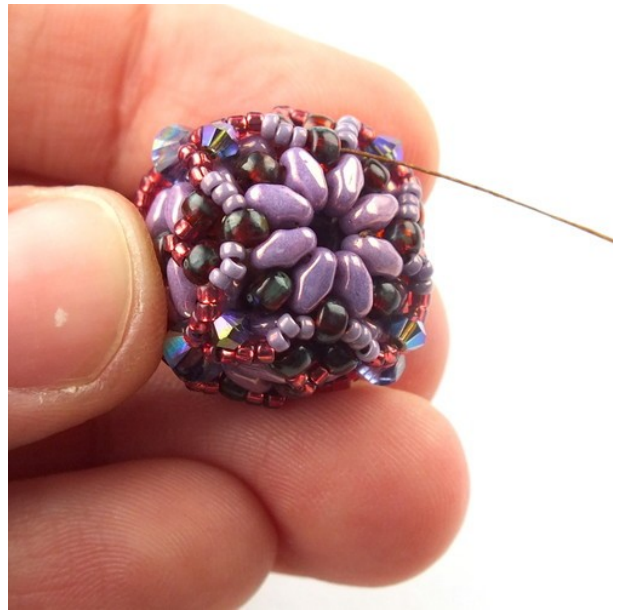


47) Add one 3mm bicone. Skip the next four 15/0s and pass through the last two 15/0s (as shown on the photo).



48) Add three 15/0s and pass through the "unused" 8/0 in the next corner (like in step 45).

49) Repeat steps 46 - 48, until you reach the end of the row.



50) Weave through beads to get to the other side of the bead and repeat steps 44-48.

51) Now the cube is finished. Tie a few half-hitch knots and cut off all the remaining thread. Then use the needle to find a hole in the core bead and move it so it faces the "open" side of the bead, so you can string it.



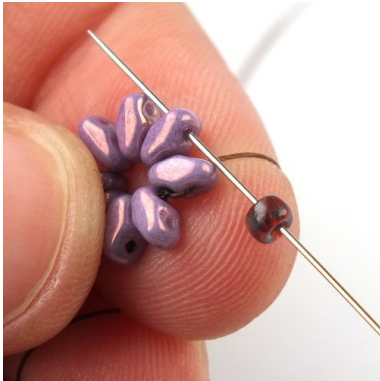
Small rondelle



1) String eight Miniduos and slide them to the end of the thread.



2) Tie a square knot to form a circle, then pass through the upper hole of the nearest Miniduo.



3) Add one 8/0 and then pass through the upper hole of the next Miniduo.



4) Repeat step 3 ...

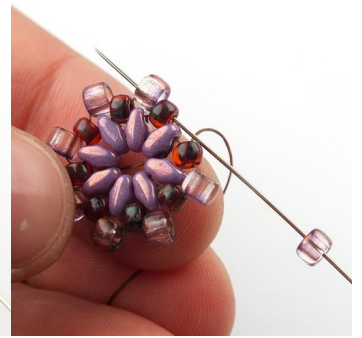
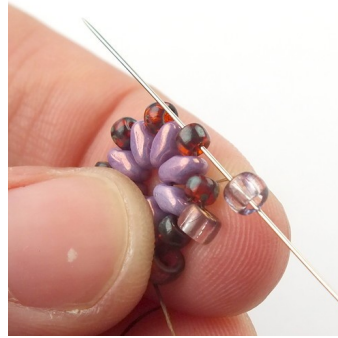


5) ... until you reach the end of the row. Make the step-up by passing through the upper hole of the next Miniduo and through the first 8/0.

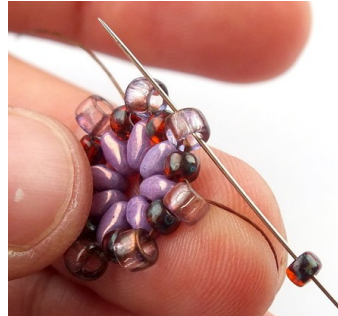


6) Add one 7/0 and pass through the next 8/0 from the previous row.

7) Repeat step 6, until you reach the end of the row. At the end of the row make the step-up by passing through the last 8/0 and then through the next 7/0.



8) Add one 8/0 and pass through the next 7/0.



9) Repeat step 8, until you reach the end of the row. At the end of the row, make the step-up by passing through the last 7/0 and through the first 8/0.

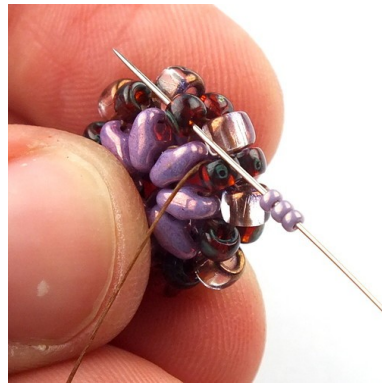


10) Add one Miniduo and then pass through the next 8/0.





11) Repeat step 10 ...

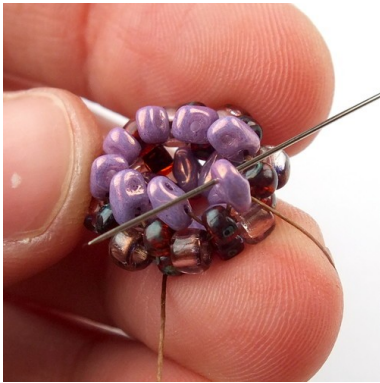


16) Add three 15/0s and pass through the next 8/0 from the same row.

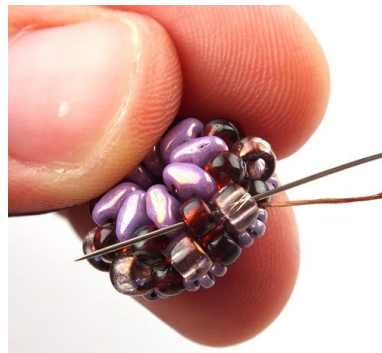


12) ... until you reach the end of the row. At the end of the row make the step-up by passing through the last 8/0 and through the lower hole of the first Miniduo.

17) Repeat step 16, until you reach the end of the row.



13) ... and then pass back through the upper hole of the same Miniduo.



18) Weave through beads to get to one of the 8/0s on the other side of the rondelle.



14) Now weave through upper holes of all the eight Miniduos from the previous row. Pull snug.



19) Repeat step 16, until you reach the end of the row.

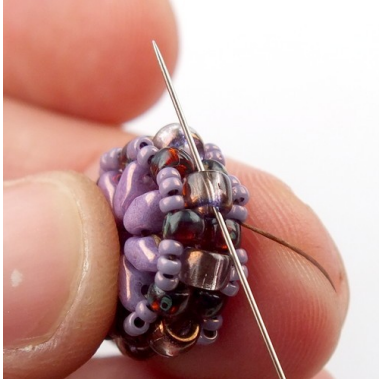


15) Weave through beads to get to one of the 8/0s.



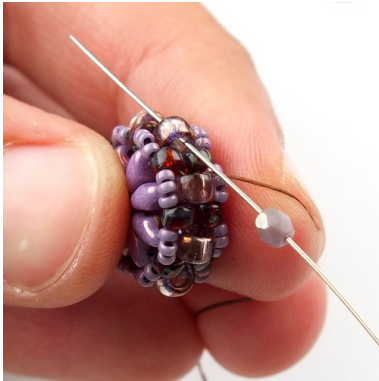
20) Now the small rondelle is finished. You can tie a few half-hitch knots and cut off all the remaining thread.

Large rondelle

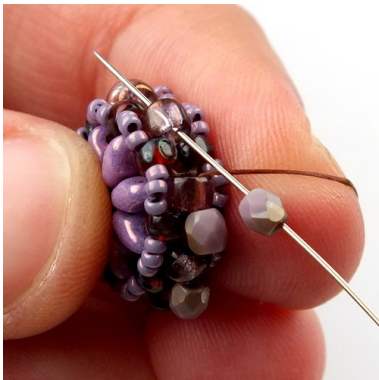


21) Make one small rondelle by repeating steps 1 - 20, but don't cut the thread.

Instead, pass through the nearest 7/0.



22) Add one 3mm FP and pass through the next 7/0.



23) Repeat until you reach the end of the row.



24) Now the thread exits from one of the 7/0s. Add four 15/0s and pass through the next 7/0.



25) Repeat step 24, until you reach the end of the row.



26) Then repeat the same on the other side of the rondelle (pass through the same 7/0s, but put the new 15/0s on the other side of the rondelle).



27) Tie a few half-hitch knots and cut off all the remaining thread.



When I make this type of necklace, I usually make two smaller rondelles, two larger rondelles and one cube and I string them on a beading wire, combined with glass or gemstone rondelles and round beads of various sizes. They also work great with lampwork beads.