

Creative BeadCraft Limited

October 2007

Kit

Number BD3

Semi-Precious and Swarovski Bracelet and Earrings

Materials for bracelet:

- 14 pieces of semi-precious (SPCS)
- 15 6 mm Swarovski crystals (CGB11S)
- 29 2" headpins (JF18)
- 1 toggle (JF161)
- .2 metre chain (C6)
- 2 oval jump rings (JF105)

Materials for earrings:

- 2 pieces of semi-precious (SPCS)
- 2 6 mm Swarovski crystals (CGB11S)
- 1 pair fish hook earrings (JF57)
- 2 headpins (JF18)
- 2 eyepins (JF80)
- 2 short pieces of chain (C6)

Tools:

- 3-in-1 pliers (S159)



Photography: Anthony Jones for Quick & Crafty magazine

Instructions:

Bracelet

Attach one part of the toggle to the chain using a jump ring.

Thread a Swarovski crystal on a headpin and form a loop (see Guide to Jewellery Making). Attach the loop to the first link on the chain. Place a piece of semi-precious on a headpin, form a loop and attach it to the chain, missing one link. Continue to add the crystals and semi-precious to alternating links on the chain, ending with a piece of semi-precious. Cut the chain with one spare link. Attach one of the jump rings to this and hang a Swarovski crystal from it (this just avoids too much of a gap). Attach the other part of the toggle to the jump ring.

Earrings

Thread a piece of semi-precious on a headpin and form a loop. Attach an eyepin to this loop, thread a Swarovski crystal on and form a loop. Attach a short piece of chain to the loop (ours was 3 links long). Attach the other end of the chain to a fish hook earring.

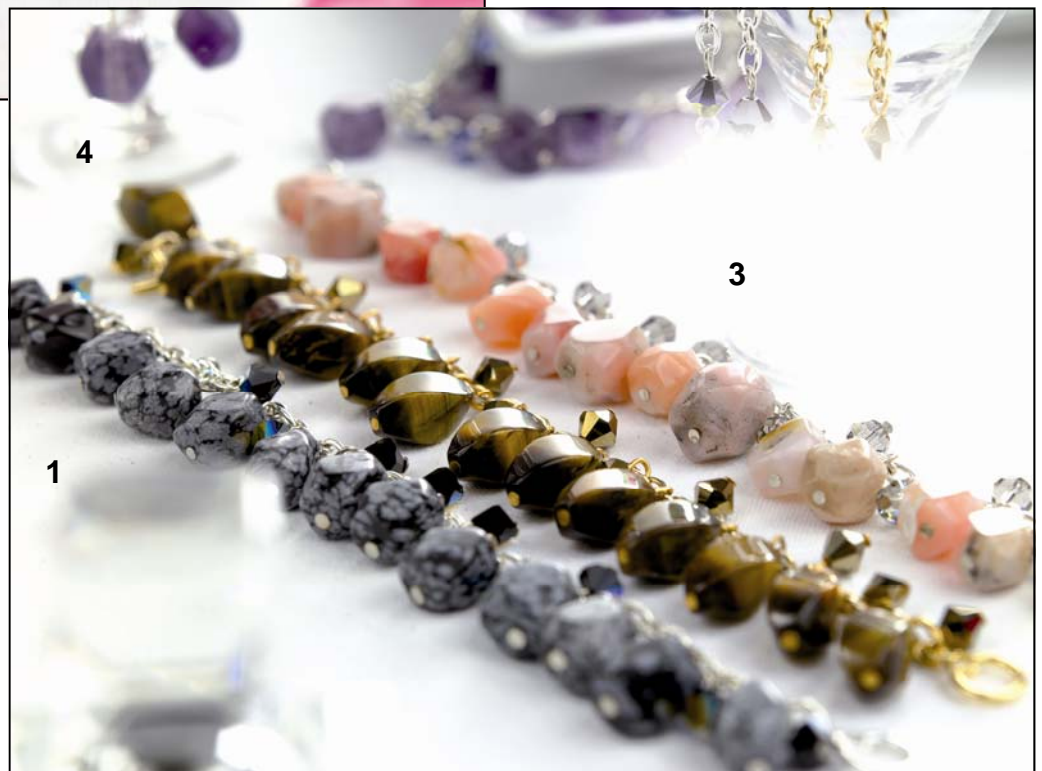


Semi-Precious and Swarovski Bracelet and Earrings



2

- 1 Snowflake and jet
- 2 Amethyst and tanzanite
- 3 Opalite and black diamond
- 4 Tiger eye and crystal dorado



4

3

1

The sizes and shades may vary due to the nature of the semi-precious stones and the cutting process